

HARVEST TEC MODEL 488 LIGHT KIT FOR JOHN DEERE ROUND BALER SURFACE WRAP COMPARTMENT

INSTALLATION INSTRUCTIONS

STEP 1: Center the lights in the compartment as low as possible on the surface between the latch and the handles. Position lights so the wire harness runs to the right side of baler.



STEP 2: Spread the lights apart so they are 14 inches from each side of the edge of the surface wrap compartment. The lights should fit between the two spots where the compartment comes in contact with its stops on the bottom of the frame. These areas should be marked to assure that the lights don't come in contact with the stops when closing the compartment.

STEP 3: Mark the location of the 4 holes for each bracket, center punch and drill 1/8" pilot holes.

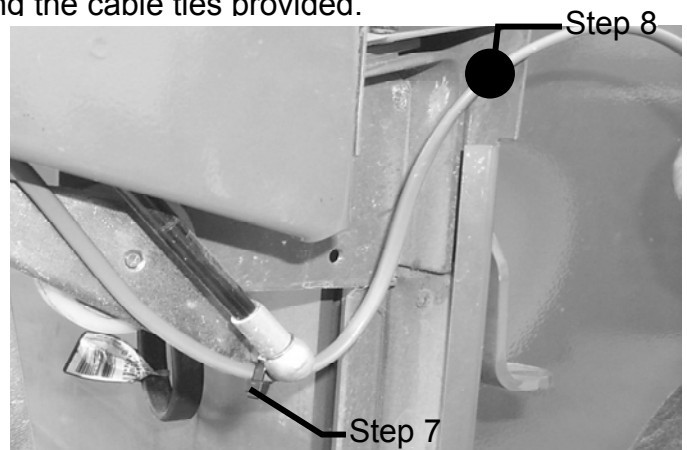
STEP 4: Secure each light bracket with the self-tapping screws provided in the kit. Secure the wire, between the lights, to the door with the padded jiffy clips so they don't get wrapped into the baler.

STEP 5: Route the wire harness over to the right side of the compartment door, and then follow the rolled over edge on the side of the compartment towards the front of the baler.

STEP 6: Secure the wire harness to the side of the compartment by drilling five 1/4" diameter holes just above the rolled over edge. Insert the cable tie buttons from the outside of the machine and fasten to the wire harness using the cable ties provided.

STEP 7: Route the wire harness around the bottom of the connection between the shock and the pivot point and fasten with a cable tie. Make sure that, there are no interferences and the compartment closes properly.

STEP 8: Drill a 9/16" diameter hole in the front, upper right corner of the compartment through the thinner sheet metal. Insert the grommet from the kit and run the wire harness through the grommet.



STEP 9: Run the bale wrap wiring harness up along the wire harness for the baler. Use cable ties to fasten the bale wrap wiring harness to the baler wiring harness.

STEP 10: Run the wire up to where the baler's harness goes into the red taillight. Tap the black wire into a black wire from the plug and the green wire to the brown wire coming from the plug using the moisture resistant tap connections. See chart on the next page.

Wiring Instructions Per Baler

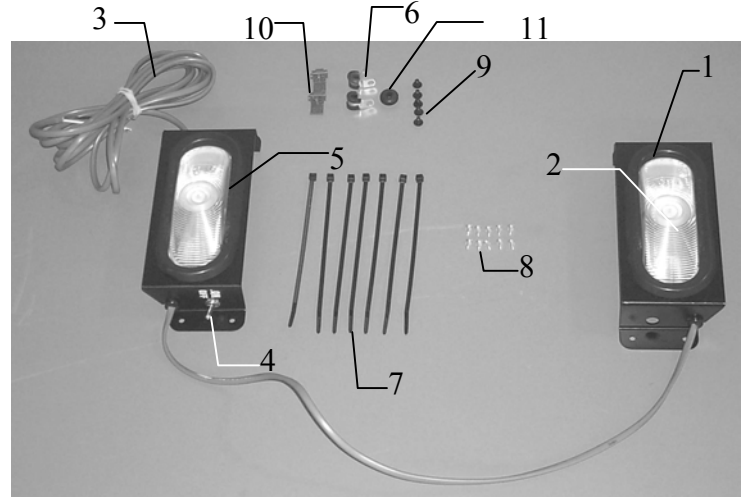
5 Series
Light/Baler
Green/Brown
Black/Black

6 Series
Light/Baler
Green/Brown 101
Black/Black 100

7 Series
Light/Baler
Green/Brown 101A
Black/Black 100B

STEP11: To test and operate the lights, turn on the baler's tail lights and flashers, and then turn the bale wrap light switch on.

<u>Ref#</u>	<u>Description</u>	<u>Part #</u>
1	Light bracket	001-4881
2	Light	006-4882
3	Wiring harness	006-4883
4	Switch	006-2189
5	Light grommet	006-4884
6	Padded jiffy clip	008-9011
7	Cable ties-8"	
8	Screw: 10-24x1/2"	
9	Cable tie buttons	
10	Tap connectors	
11	Hole grommet	



WARRANTY AND LIABILITY AGREEMENT

Harvest Tec, Inc. will repair or replace components that are found to be defective within 12 months from the date of manufacture. Under no circumstances does this warranty cover any components which in the opinion of Harvest Tec, Inc. have been subjected to negligent use, misuse, alteration, accident, or if repairs have been made with parts other than those manufactured and obtainable from Harvest Tec, Inc.

Our obligation under this warranty is limited to repairing or replacing free of charge to the original purchaser any part that in our judgment shows evidence of defective or improper workmanship, provided the part is returned to Harvest Tec, Inc. within 30 days of the failure. Parts must be returned through the selling dealer and distributor, transportation charges prepaid.

This warranty shall not be interpreted to render Harvest Tec, Inc. liable for injury or damages of any kind, direct, consequential, or contingent, to persons or property. Furthermore, this warranty does not extend to loss of crop, losses caused by delays or any expense prospective profits or for any other reason. Harvest Tec, Inc. shall not be liable for any recovery greater in amount than the cost or repair of defects in workmanship.

There are no warranties, either expressed or implied, of merchantability or fitness for particular purpose intended or fitness for any other reason.

This warranty cannot guarantee that existing conditions beyond the control of Harvest Tec, Inc. will not affect our ability to obtain materials or manufacture necessary replacement parts.

Harvest Tec, Inc. reserves the right to make design changes, improve design, or change specifications, at any time without any contingent obligation to purchasers of machines and parts previously sold.

Revised 01/03/06