

2006 Automatic kit upgrade:

Harvest Tec is now offering a complementary hardware and software upgrade for all 2006 automatic systems. With this upgrade the system will have an expanded circuitry protection. While not a mandatory upgrade, it is important for the long-term serviceability of the components. This upgrade is for all balers, and will include all systems with a serial number 2000 to 2999. The serial number can be found on the back of the touch screen terminal & on the front of the baler mounted processor.

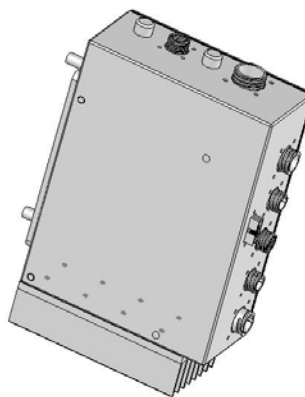
The two components needed for this update are the touch screen terminal (006-4670) and the baler mounted processor (006-4671). See pictures below.

Please package the unit properly to avoid any damage in transit. If you are unsure how to package the unit please visit a packing store (UPS store, Mailbox, Fedex Kinkos) or have your local dealer assist in the packaging. **Take care in packaging of the unit for Harvest Tec will assume no responsibility for damage to the unit in shipping. If any of the components arrive broke Harvest Tec will notify of the cost to repair.** Harvest Tec will pay for the packaging and shipment back to your designated point of return.

Feel free to call or email any questions or concerns. info@harvesttec.com 800-635-7468 ext 0



Cab Terminal (006-4670)



**Baler Mounted Processor
(006-4671) Found on the baler next
to the three pumps**

Please fill out the bottom form and return with above mentioned parts.

Applicator serial number:

Customer name:

Address:

Phone: Home

Cell:

Dealer name:

Return parts to: Harvest Tec Inc.
2821 Harvey Street
P.O. Box 63
Hudson, WI 54016

Phone: 715-386-9100
Fax: 715-386-9509