

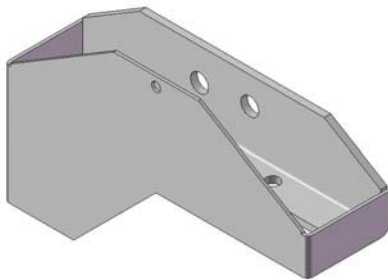
**Tools Needed:**

½" deep socket  
Ratchet drive

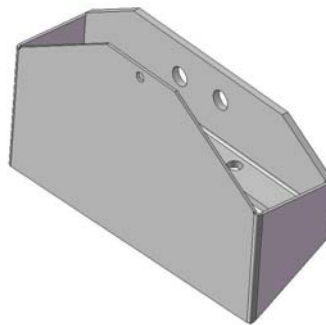
## 2010 Twine Diverter Upgrade

2010 Automatic applicators for large square balers have a redesigned twine diverter to allow more hay chaff to pass through the twine diverter by the star wheel. It has been brought to our attention that on some makes and models, the twine may break if it comes in contact with the star wheel. This may happen in only 1 in 50 bales or up to 1 in 1000 bales. Because of this, we have redesigned the twine diverters and if you contact Harvest Tec directly we will send you a free set of the improved diverter. It should only take about 15 minutes to update your baler and you will not have to remove the star wheels to replace this bracket. Only units shipped between 12/1/09 and 8/12/10 may be affected. Below are some drawings showing the twine diverters that are good and the ones that need to be replaced.

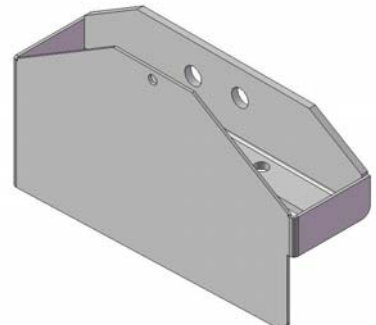
Right-side twine diverters shown



Diverter that needs to be replaced



Original style that is still functional



New redesign for 2010

## Procedure

1. Remove the two proximity sensors from the twine diverter on the right side of the bale chamber. Set aside carefully.
2. Remove the two nuts and lock washers that hold the diverter to the star wheel block. Repeat this step for the diverter on the left side of the bale chamber.
3. Position new diverter without sensor holes in place on the left side of the bale chamber and tighten lock washers and nuts.
4. Position new diverter with sensor holes in place on the right side of the bale chamber and tighten lock washers and nuts.
5. Place the proximity sensors back into the right side twine diverter and verify proper distance to star wheel teeth. (Between 1/4" and 1/8"). Tighten jam nuts to hold sensors in place.